

« We can make
any structure
TACTILE »

« Transparent, Opaque,
Flat, Curved »

« An infinity of
products to develop
in partnership with
manufacturers »

« Contact us
to integrate
the technology
into your products
to create:
Touch screens,
Tactile interfaces,
or
Pressure Mapping
Sensors »

All Waves TOUCH™ Active Acoustic Pressure Mapping System

Description of the technology

Thanks to a patented technology developed by researchers from the University of Sherbrooke, we can make any structure tactile. All Waves TOUCH™ technology aims at detecting and localizing multiple points in contact with a surface. The principle is based on the reflection, in the presence of a contact, of ultrasonic guided waves generated and measured using piezoceramics located on the edges of the structure.

Commercial Advantages

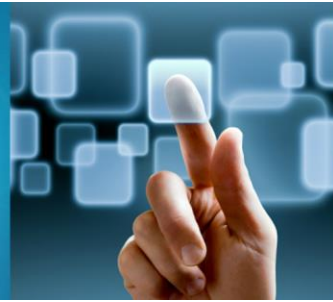
Affordability, Versatility of applications and materials, Simplicity, Robustness

Technical Advantages

Multi-Touch localization and tracking

Measurement of contact pressure

Simplicity	Requires limited number of sensors located on the edges of the structure
Scalability	Compatible with large structures, complex geometries
Versatility	Any material, size, thickness and curvature
Contact	Any contact material and size can be used for the contact (skin, pencil, gloves, etc.)
Stability	One-time factory calibration, no drift with respect to time or temperature
Precision	0.5 mm precision on contact localization, 10 000 pixels
Real-time	30 ms latency for pressure imaging 60 fps for touch localization



« We can make
any structure
TACTILE »

« Transparent, Opaque,
Flat, Curved »

« An infinity of
products to develop
in partnership with
manufacturers »

« Contact us
to integrate
the technology
into your products
to create:
Touch screens,
Tactile interfaces,
or
Pressure Mapping
Sensors »

Examples of applications

PROMOTIONAL DISPLAYS & SMART CITY

Transparent or opaque oversized digital signage
displays and kiosks
Architectural interactive windows
Smart home and interactive furniture

VISUAL ART AND ENTERTAINMENT

Transparent and opaque oversized visual
displays
Tactile floors, walls, objects

EDUCATION & COLLABORATIVE TOOLS

Tactile boards, meeting tables, display walls

TRANSPORTS

Touch-sensitive car interior elements
(interactive visual displays backdoors,
dashboards, etc.)

MEDICAL

Pressure mats
Rehabilitation and posture analysis equipment

We integrate the technology in your products

Evaluation kit available

Tactile tempered glass plate

Dimensions

- 20 cm x 20 cm area
- 5 mm thickness

Performance

- Multi-touch tracking
- 0.5 mm localization resolution,
10 000 pixels
- Localization frequency: 60 fps

